

Washington State: June 24 – 26, 2012

**DAY 1:** Depart Spokane at 8:00am and travel through Eastern Washington. Learn about its rich agricultural land, the farmers and the crops they grow. Visit the town of Leavenworth patterned after Germany's Bavaria. Experience



the scenic Cascade Mountains on the way to Seattle, which are a part of the "Ring of Fire" that notorious formation of old and active volcanoes that circle the Pacific Rim. Dinner is on your own tonight. Upscale shopping is right outside your door. Tour the Seattle Underground including subterranean sidewalks and storefronts created when street levels were raised 8 to 35 feet following a fire in 1889.

**DAY 2:** Explore the Klondike Gold Rush Museum commemorating the city's role in the gold rush or visit The Museum of Flight that chronicles the history of aerospace technology and its pioneers. Free time and lunch on your own at Pike Place Market.



Eight farmers brought their wagons filled with fresh food to the corner of First Avenue and Pike Street—and were quickly overwhelmed by an estimated 10,000 eager shoppers. This afternoon visit the landmark Seattle Space Needle. Constructed for the 1962 World's Fair this structure includes a ride to the top for views of the Cascade Mountains, Puget Sound, Olympic Mountains and greater Seattle area. Tonight escape on a 45 minute cruise to Blake Island State Park for a Tillicum Village Evening. As you finish your meal, the lights dim while the myth and magic come to life in the spellbinding performance of Dance on the Wind, featuring dances in the spirit of coastal tribes.

**DAY 3:** This morning, Ride the Ducks! Seattle's hilarious, Coast Guard-certified adventure, tour on the ground, then SPLASH into the water to cruise on Lake. Lunch is on your own. Travel through Snoqualmie Pass in the Cascade Mountains and return to Spokane late afternoon.

**Includes:** Motorcoach transportation; guide; 2 nights Courtyard Marriott Pioneer Square; 2 breakfasts; Tillicum Village Evening; admission to Space Needle, Ride the Ducks, The Museum of Flight, Seattle Underground, all taxes and gratuities. Driver and guide gratuities not included.

**Cost:** Double Occupancy \$545.00 per person



Space Needle



Pike Place Market



Ride the Duck Boats

#### Disclaimer for Tour Brochure

All participants in activities and use of facilities contracted for shall be undertaken by each individual at his or her own risk. The 61st National Square Dance Convention® acts solely in the capacity of agent on behalf of its tour patrons in arranging for tour service with Group Coordinators Inc. and is not responsible for loss, damage, delay, injury or accident due to any act or default of the part of the convention or tour company or providers of tours or services provided. Personal items and souvenirs are the sole responsibility of the passenger.

(2/14/2010)

**Send all tour Registrations to:**

#### 61st NSDC Tours

PO Box 48775  
Spokane, WA 99228

#### Questions or Concerns ?

Contact:

**Social & Special Event Chairman-**  
Roger & Beth Barnes  
socialspecialchair@61nsdc.com

## 61<sup>st</sup> National Square Dance Convention®

### CIRCULATE AROUND



### THE STATE TOURS

*You won't believe all the Tour  
Options in Spokane*

#### Tours included in this brochure

-  Spokane City Tour
-  Green Bluff Orchards
-  Buck Knives & Cabelas
-  Grand Coulee - Geologic
-  Spokane Wineries
-  Cruise on Lake Coeur d'Alene
-  Shopping, Chocolate & Wine Tasting
-  Lunch Cruise on Lake Coeur d'Alene
-  Dinner & Laser Lights on Grand Coulee Dam
-  Silver Valley & Historic Wallace Idaho
-  Glacier National Park
-  Explore Washington State

### Spokane City Tour

June 26, 27, 29, 30th  
9:00am – noon

Enjoy a tour of the rich history, historic homes and attractions of Spokane including; the Spokane Falls, the grounds of the former Expo '74 site, now Riverfront Park, Saint John's Cathedral, Manito Park with the formal



sunken gardens, Japanese Gardens and flower-filled Conservatory, historic mansions in Browne's Addition and the



Crosbyanna Room at Gonzaga University to see Bing Crosby memorabilia.

**Includes:** Motorcoach, guide and all stops.

**Cost:** \$35.00 per person

### Green Bluff Orchards – Alpacas, Shopping, Farm Lunch and Wine

June 27, 28, 30th  
10:00am – 2:30pm

Tour the unique area of Green Bluff, 700 acres of orchards and ranches including; the SuperSuris Alpaca Ranch to see over 50 adorable alpacas a less common breed of alpacas, with silkier fleece. After that, browse through the gift shop, with high quality clothing and gifts made of alpaca fleece. The clothing is said to be soft as cashmere and smooth as silk. Next to High Country Orchards with sandwiches



made with fresh baked bread, fresh fruit pie for dessert and a great gift shop. At Trezzi's Barn, tour the vineyard and taste their Italian wines.

Continue through Green Bluff for "Blooms on the Bluff" to see all the fruit blossoms.



**Includes:** Motorcoach, guide, all admissions, wine tasting and lunch.

**Cost:** \$68.00 per person

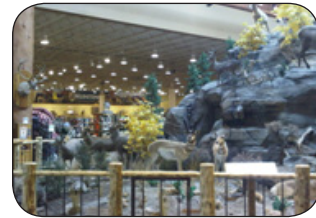
### Buck Knives, Cabela's and the Nut Factory

June 29th  
9:30am – 3:00pm

Take a tour of famous Buck Knives, a knife manufacturer, which has lasted through 5 generations, starting in 1902 and moved its' plant to Post Falls in 2005. Then to



Cabela's, the world's foremost outfitter. This is not just a store it is a destination, with huge displays of wild animals and outdoor scenes.



We will have a catered lunch on site. Last stop is The Nut Factory to see the roasting of the nuts; taste the freshly roasted nuts and shop in their gift shop.

**Includes:** Motorcoach, guide and lunch at Cabela's.

**Cost:** \$58.00 per person

### Grand Coulee Dam, Dry Falls / Geologic Tour

June 29th  
9:30am - 4:30pm

Travel through Eastern Washington's rich farm country and learn about the Cataclysmic Ice Age Flood along the way. Tour the visitor center at Grand Coulee Dam and go inside this concrete structure to see the massive turbines and generators that make it one of the largest hydroelectric generating dams in the world. Enjoy lunch overlooking the dam. Then, travel along the Grand Coulee and stop at amazing Dry Falls, the skeleton of one of the greatest waterfalls in geological history. By comparison, Niagara Falls would be dwarfed by this unique formation.



**Includes:** Motorcoach, guide, and lunch.

**Cost:** \$63.00 per person

### Spokane Winery Tour

June 28, 29, 30th  
1:00-5:00pm

Did you know Washington is the second largest wine producing state in the country? On this tour stop at Arbor Crest Winery perched on a rock 450 feet above the Spokane River, taste



their wines, then tour the grounds and Riblet Mansion, once owned by an inventor. Next, visit Mountain Dome Winery, Washington's premier sparkling winery where the sparkling wine (Champagne) is made the European way. Last stop is Latah Creek Winery and Gift



Shop, heralded by Wine Spectator Magazine as one of the top producers of Merlot in Washington State.

**Includes:** Motorcoach, guide, and 3 wine tastings.

**Cost:** \$57.00 per person

### Shopping, Chocolate, and Wine

June 28, 29th  
12:30-5:00pm

We will stop at Simply Northwest downtown, and Gallery of Thum, stocked with every kind of discipline of art from regional artists. Finders' Keepers has a large assortment of jewelry, both vintage and new. Each store will offer us something special. Next, stop for a wine tasting at Whitestone Winery Tasting Room in Spokane. Our stop at Chocolate Apothecary, in the historic Flour Mill will be for chocolate tasting with 5 different chocolates from around the world. You will have a sheet explaining how to taste chocolate and a description of each. We'll vote for our favorite at the end. Next, at the Wonder's of the World (receive 20% off any one item) and on to the Kitchen Engine, with every kitchen gadget you can think of.



**Includes:** Motor coach, guide, wine tasting and chocolate tasting.

**Cost:** \$50.00 per guest.

**Note:** Chocolate Apothecary and the Kitchen Engine are closed on Saturday.

### The Silver Valley and Historic Wallace

June 29, 30th

9:00 - 4:00pm

Get a realistic glimpse of the old mining days on the way to the world's richest Silver Mining District. Stop at Cataldo Mission, the oldest building in the state of



Idaho, built by the Coeur d'Alene Indian Tribe and Jesuit Missionaries in 1853. Then to Wallace, the Silver Capital of the World. Ride the trolley up to the Sierra Silver Mine, put on your hard hat and walk into the mine to see how the miners worked. Next, have lunch at the historic Jameson Hotel. We will also tour the Bordello Museum, an actual old Bordello, to show a glimpse of Wallace's colorful



past.

Note: Please bring light jacket for the mine tour.

**Includes:** Motorcoach, guide, all admissions and lunch.

**Cost:** \$86.00 per person

### Dinner and Spectacular Laser Light Show on Grand Coulee Dam

June 28, 29th

5:30pm-12:30am

Travel through Eastern Washington's rich farm country and learn about the Cataclysmic Ice Age Flood along the way. Stop for dinner overlooking the dam before touring the Visitors Center.

Next, see the Laser Light Show on one of the world's largest dams, Grand Coulee. The show is narrated and accompanied by music.



**Includes:** Motorcoach, guide and dinner.

**Cost:** \$71.00 per person.

### Public Cruise on Lake Coeur d'Alene

June 26, 29, 30th

1:00-5:00pm

Travel to North Idaho for a 90 minute public cruise on Lake Coeur d'Alene.

National Geographic reports this as one of the most beautiful lakes in

the world. On the cruise pass by the now famous floating green at the Coeur d'Alene Resort Golf Course. Free time to explore downtown Coeur d'Alene

**Includes:** Motorcoach, guide, and cruise.

**Cost:** \$55.00 per person



### Private Lunch Cruise on Lake Coeur d'Alene Cruise

June 28th ONLY

11:00am-3:00pm

Travel to Idaho for a two hour private lunch cruise on Lake Coeur d'Alene. Lunch will be prepared by the 5 Star Coeur d'Alene Resort.

National Geographic reports this as one of the

most beautiful lakes in the world. On the cruise pass by the now famous floating green at the Coeur d'Alene Resort Golf Course.

**Includes:** Motorcoach, guide, and private cruise, with a delicious lunch buffet.

**Cost:** \$75.00 per person



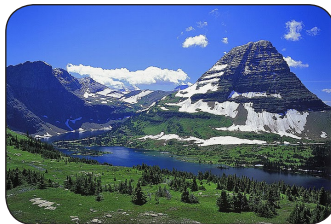
### Glacier National Park

June 24 - 26, 2012

**Day 1** Depart

Spokane at 8:00am and travel across the North Idaho Panhandle learning about the geology,

Native Americans, and miners of the Silver Valley. More silver has been mined in this valley than any other location in the world. At Kellogg tour the Crystal Gold Mine, the only authentic 1880's underground gold mine tour in the Northwest; pan for gold and precious gem stones. Next, travel along the banks of Flathead Lake, the largest natural lake in the western United States.



### Glacier National Park (con't)

Visit Lonesome Dove Ranch for a "down-home" Montana ranch dinner with host and hostess Hal and Sharon. The Forsbeys, a husband and wife duo, will entertain you with true Western music. Overnight Kalispell MT.

**Day 2:** One of the most amazing highlights of Glacier National Park is a drive on the Going-to-the-Sun Road. This engineering marvel spans 50 miles through the park's wild interior, winding around mountainsides and treating visitors to some of the best sights in northwest Montana. This is the only road through the Park. Sit back and enjoy the park's spectacular scenery in a historic Red Bus. On clear days, the canvas roofs are rolled back and transformed into convertibles. Along the way stroll the trail of "The Ancient Cedars" and enjoy lunch and a cruise on glacial-fed St. Mary Lake. Dinner is at Glacier Park Lodge built almost a century ago by the Great Northern Railway. The Blackfoot Indians named the new lodge "Omahkoyis" or "Big Tree Lodge". The immense timbers that support the Lodge were probably 500 to 800 years old when they were cut and all of them retain their bark. There are 60 of them, 36 to 42 inches in diameter and 40 feet long. The timbers in the lobby are Douglas fir and the verandahs are supported by Cedars from Washington. Return to Kalispell for the night.

**Day 3:** Tour the Conrad mansion and hear about Charles E. Conrad, a founder of Kalispell. He arrived in the Flathead Valley in 1891, when this lovely town with its tree-lined streets was still but a dream. But Conrad had vision, and he felt that not only had he found a good investment opportunity, but also a permanent home for his descendants. Along with establishing the Kalispell Townsite Company and eventually the Conrad National Bank, he hired Spokane architect, Kirtland Cutter, to build this gracious Victorian home in 1895. In scenic North Idaho stop at Sandpoint on the banks of Lake Pend O'rielle and shop at Cold Water Creek. Arrive in Spokane late afternoon.

**Includes:** Motorcoach transportation, guide, 2 nights Hilton Garden Inn Kalispell, 2 breakfasts, 1 lunch, dinner and entertainment Lonesome Dove Ranch, dinner Glacier Park Lodge, St. Mary Lake Cruise & box lunch, all admissions, taxes and gratuities. Driver and guide gratuities not included.

**Cost:** Double Occupancy \$550.00 per person

**Day Tour Registration****Tuesday, June 26th**

<u>Cost</u>	<u># of Tickets</u>	<u>Times of Tours</u>
Spokane City Tour \$35.00 pp	_____	9:00am - 12 noon
Lake Coeur d'Alene Cruise \$55.00 pp	_____	1:00pm - 5:00pm

**Wednesday, June 27th**

Spokane City Tour \$35.00 pp	_____	9:00am - 12noon
Green Bluff Orchards \$68.00 pp	_____	10:00am - 2:30pm

**Thursday, June 28th**

Green Bluff Orchards \$68.00 pp	_____	10:00am - 2:30pm
Shopping, Chocolate & Wine \$50.00 pp	_____	12:30pm - 5:00pm
Spokane Winery Tour \$57.00 pp	_____	1:00pm - 5:00pm
Grand Coulee Dam Lights & Dinner \$71.00 pp	_____	5:30pm - 12:30am
Lake Coeur d'Alene Cruise & Lunch \$75.00 pp	_____	11:00am - 3:00pm

**Friday, June 29th**

Spokane City Tour \$35.00 pp	_____	9:00am - 12noon
Buck Knives, Cabela's & Lunch \$58.00 pp	_____	9:30am - 3:00pm
Shopping, Chocolate & Wine \$50.00 pp	_____	12:30pm - 5:00pm
Spokane Winery Tour \$57.00 pp	_____	1:00pm - 5:00pm
Grand Coulee Dam Geological Tour \$63.00 pp	_____	9:00am - 4:30pm
Silver Valley & Historic Wallace \$86.00 pp	_____	9:00am - 4:00pm
Lake Coeur d'Alene Cruise \$55.00 pp	_____	1:00pm - 5:00pm
Grand Coulee Dam Lights & Dinner \$71.00 pp	_____	5:30pm - 12:30am

**Saturday, June 30th**

Spokane City Tour \$35.00 pp	_____	9:00am - 12noon
Silver Valley & Historic Wallace \$86.00 pp	_____	9:00am - 4:00pm
Green Bluff Orchards \$68.00 pp	_____	10:00am - 2:30pm
Spokane Winery Tour \$57.00 pp	_____	1:00pm - 5:00pm
Lake Coeur d'Alene Cruise \$55.00 pp	_____	1:00pm - 5:00pm

**TOTAL** \$ \_\_\_\_\_ Total # of tickets \_\_\_\_\_

**Note:** Tours meeting the minimum numbers may still be available at the Convention until sold out.

*If the minimum number of guests registered for the tour is not reached by May 29, 2012, the tour will be cancelled and your money will be refunded.*

Name (s) \_\_\_\_\_ Address \_\_\_\_\_

City \_\_\_\_\_ State \_\_\_\_\_ Zip Code \_\_\_\_\_

Phone( \_\_\_\_\_ ) \_\_\_\_\_ email \_\_\_\_\_ *Cancellation fee: \$10.00*

Check enclosed for: \$ \_\_\_\_\_. *(Checks or Money Orders Preferred)* If paying by Credit Card: MC  Visa

Number \_\_\_\_\_ Expiration Date \_\_\_\_\_

Special Needs? \_\_\_\_\_

**Glacier National Park Registration**

Name (s) \_\_\_\_\_

Address \_\_\_\_\_

City \_\_\_\_\_

State \_\_\_\_\_ Zip Code \_\_\_\_\_

Phone( \_\_\_\_\_ ) \_\_\_\_\_

email \_\_\_\_\_

Check enclosed for: \$ \_\_\_\_\_. *(Checks or Money Orders Preferred)* If paying by CC: MC  Visa

Number \_\_\_\_\_

Expiration Date \_\_\_\_\_

Special Needs? \_\_\_\_\_

**Cost:** Double Occupancy: \$550.00 per person.

Full Payment is due by April 9, 2012. Due to hotel accommodation registration. If minimum of 28 guests is not reached by that date, tour will be cancelled and your money refunded. Cancellation Policy: If you must cancel after April 24, 2012, we will refund your money up to one week in advance if we are over the minimum of guests required or can replace your reservation. *Cancellation fee: \$10.00*

**Washington State Tour Registration**

Name (s) \_\_\_\_\_

Address \_\_\_\_\_

City \_\_\_\_\_

State \_\_\_\_\_ Zip Code \_\_\_\_\_

Phone( \_\_\_\_\_ ) \_\_\_\_\_

email \_\_\_\_\_

Check enclosed for: \$ \_\_\_\_\_. *(Checks or Money Orders Preferred)* If paying by CC: MC  Visa

Number \_\_\_\_\_

Expiration Date \_\_\_\_\_

Special Needs? \_\_\_\_\_

**Cost:** Double Occupancy: \$545.00 per person

Full Payment is due by May 24, 2012. Due to hotel accommodation registration. If minimum of 28 guests is not reached by that date, tour will be cancelled and your money refunded. **Cancellation Policy:** If you must cancel after May 24, 2012, we will refund your money up to one week in advance if we are over the minimum of guests required or can replace your reservation. *Cancellation fee: \$10.00*